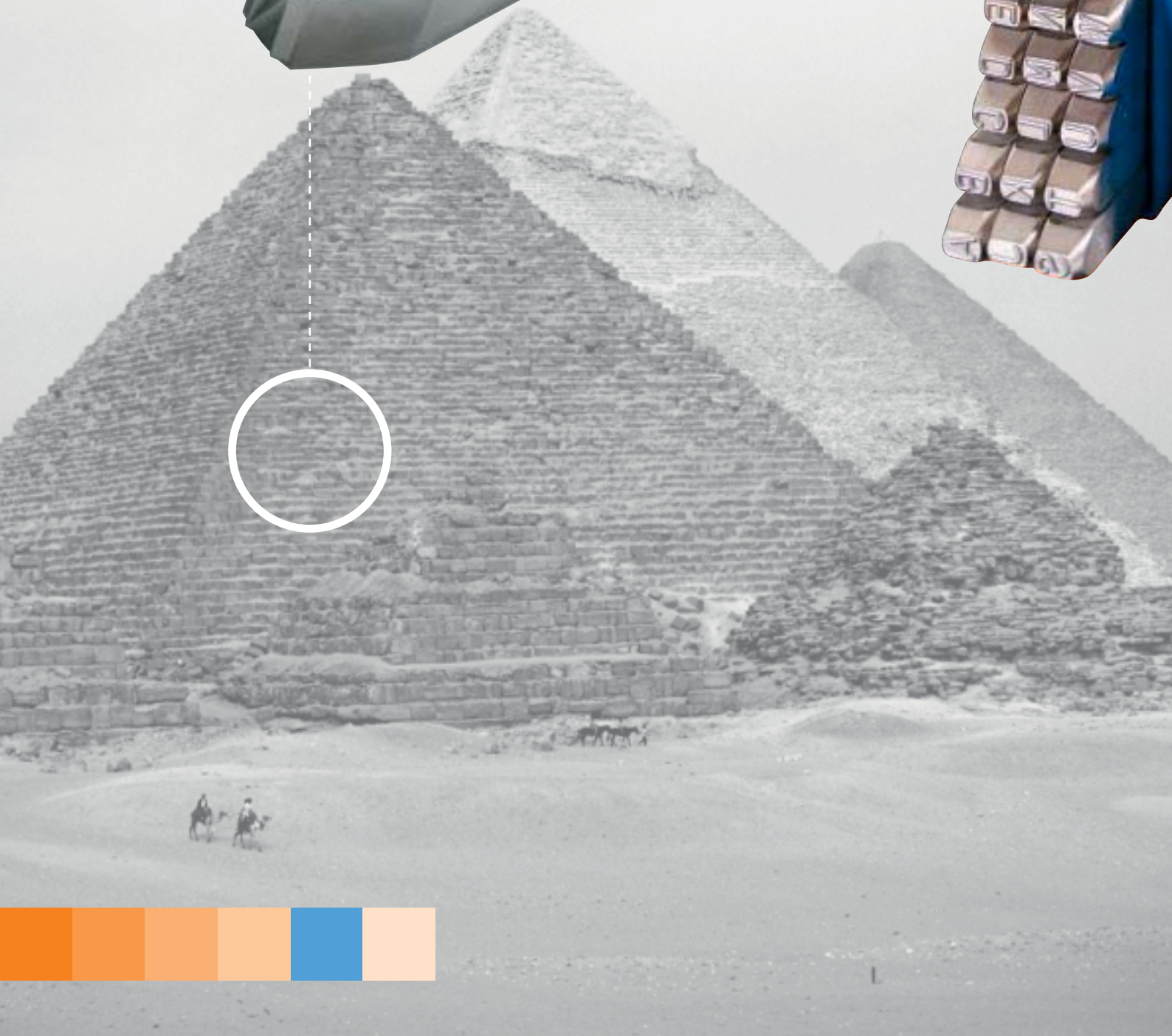


just impressive



Future has origin. Our story of success.

In times of still getting faster and faster communication, permanent text information strikes very much. No wonder that there are ranges of applications, which still require a high level of permanence and precision in the transmission of messages. There are good reasons, why they have a long and bright tradition. At the pyramids of Gizeh you can find impressive examples of old Egyptian hieroglyphs, preserved for more than 1000 years and derived essentially from simple symbols.

In this sense we, at the **Heidenpeter GmbH & Co. KG**, manufacture steel stamps and marking tools since 1932, without disregarding a view into the future. Our products are the result of long experience, highest precision and permanent technical improvement as well, as of a constant top quality. We are the only company, which is able to manufacture sets of steel stamps according to DIN 7353 in mass production.

We are inspired by our clients. They tell us about their objectives and imaginations. Considering them, we develop a common aim in dialogue. Faithful, open-minded and calculable.

No matter, if the subject is a standard item from our wide range of products, or if difficult problems of an individual project have to be solved – as an approved partner of the industry, we rely on our high qualified team of employees, who take the demands of our clients very serious. Success is guaranteed and measurable.

The potential range of applications for our steel stamps and marking tools is immense. In fact **Heidenpeter**-products have been effective approved especially in the automotive industry and the moldmaking and tooling. For branded marks, for example on Europallets, our branding irons are highly recommended.

There are good reasons, why the **Heidenpeter GmbH & Co. KG** is one of the worldwide leading companies of its kind. The use of all contemporary technologies ensures the presence on the German and international market and promotes the cooperation with successful exporters and importers. Especially in the Far East our brand "**GRAVUREM**" is comparatively unsurpassed famous in this region.

Modern logistic and continuous warehousing ensure the immediate availability of almost all items.

The signs of the times are clear.

The name **Heidenpeter GmbH & Co. KG** guarantees a reasonable teamwork of transparency, economy and innovation and ensures a common and positive future for all participants of the economical process.



GRAVUREM

Sets of numbers and letters
in six different styles and qualities.

GRAVUREM-S

Steel stamps for marking of material
with a strength of 600-800 N/mm².
Type of characters acc. to DIN 1451.

The stamps are made out of bright drawn tool steel
in silky-dulled design.

- Each punch is marked with:
- 1. The character
 - 2. Size of character
 - 3. "MADE IN GERMANY"
 - 4. The international eye protection symbol

Hardness at the engraving: 58-60 HRC.

Up to 15 mm size of characters in unbreakable blue plastic boxes.

Item		
No. 100	Set of numbers 0-9	= 9 pcs.
No. 101	Set of capital letters from A-Z + symbol &	= 27 pcs.
No. 102	Set of small letters from a-z + symbol . (full stop)	= 27 pcs.
	Right-hand engraved	
No. 103	Set of numbers 0-9	= 9 pcs.
No. 104	Set of capital letters from A-Z + symbol &	= 27 pcs.
No. 105	Set of small letters from a-z + symbol . (full stop)	= 27 pcs.

Size of character mm	Ø x L mm	ΔΔ 0-9	ΔΔ A-Z
1-3	6 x 65	150g	500g
4	7 x 65	200g	600g
5	8 x 65	300g	800g
6	9 x 75	400g	1200g
7	11 x 76	600g	1850g
8	11 x 76	600g	1850g
10	12 x 80	800g	2300g
12	14 x 80	1100g	3100g
15	16 x 85	1500g	4300g



GRAVUREM-Nr. 1 Extra

Steel stamps for the marking of material with a strength of approx. 1200 N/mm².

Type of characters acc. to DIN 1451.

The stamps are made out of bright drawn tool steel in silky-dulled design.

Kennzeichnung des Stempelsatzes:

1. The character
2. Size of character
3. "MADE IN GERMANY"
4. The international eye protection symbol

Hardness at the engraving: 58-60 HRC.

Up to 15 mm size of characters in unbreakable blue plastic boxes.

Item		
No. 110	Set of numbers 0-9	= 9 pcs.
No. 111	Set of capital letters from A-Z + symbol &	= 27 pcs.
No. 112	Set of small letters from a-z + symbol . (full stop) Right-hand engraved	= 27 pcs.
No. 113	Set of numbers 0-9	= 9 pcs.
No. 114	Set of capital letters from A-Z + symbol &	= 27 pcs.
No. 115	Set of small letters from a-z + symbol . (full stop)	= 27 pcs.

Size of character mm	Ø x L mm	ΔΔ 0-9	ΔΔ A-Z
1-2,5	7 x 75	250g	750g
3	8 x 75	300g	1000g
4	9 x 80	450g	1300g
5	10 x 80	550g	1600g
6	12 x 85	800g	2400g
7	14 x 14 x 90	1200g	3500g
8	14 x 90	1200g	3500g
10	16 x 90	1500g	4500g
12	18 x 100	2200g	6400g
15	18 x 100	2200g	6400g

GRAVUREM-Special

Steel stamps with hardened and tempered stamping heads, for highest demands in silky-dulled design.

**Manufactured acc. to DIN 7353 / Type of characters acc. to DIN 1451 (narrow).
QUALITY GUARANTEE**

Each punch is marked with:

1. The character
2. Size of character
3. SCHLAGKOPFVERGÜTET
4. The international eye protection symbol

Hardness at the engraving: 58-60 HRC.

Hardness at the stamping head: 38-46 HRC.

Up to 15mm size of characters in unbreakable blue plastic boxes.

Item		
No. 120	Set of numbers 0-9	= 9 pcs.
No. 121	Set of capital letters from A-Z + symbol &	= 27 pcs.
No. 122	Set of small letters from a-z + symbol . (full stop) Right-hand engraved	= 27 pcs.
No. 123	Set of numbers 0-9	= 9 pcs.
No. 124	Set of capital letters from A-Z + symbol &	= 27 pcs.
No. 125	Set of small letters from a-z + symbol . (full stop)	= 27 pcs.

Size of character mm	Ø x L mm	ΔΔ 0-9	ΔΔ A-Z
1-2,5	7 x 75	250g	750g
3	8 x 75	300g	1000g
4	9 x 80	450g	1300g
5	10 x 80	550g	1600g
6	12 x 85	800g	2400g
7	14 x 14 x 90	1200g	3500g
8	14 x 90	1200g	3500g
10	16 x 90	1500g	4500g
12	18 x 100	2200g	6400g
15	18 x 100	2200g	6400g



GRAVUREM-T

Steel stamps with hardened and tempered stamping heads and an impression with controlled depth, in silky-dulled design.

Type of characters acc. to DIN 1451 (middle).
QUALITY GUARANTEE

Each punch is marked with:

1. The character
2. Size of character
3. SCHLAGKOPFVERGÜTET
4. The international eye protection symbol

Hardness at the engraving: 58-60 HRC.

Hardness at the stamping head: 38-46 HRC.

Up to 10mm size of characters in unbreakable blue plastic boxes.

Item		
No. 130	Set of numbers 0-9	= 9 pcs.
No. 131	Set of capital letters from A-Z + symbol & Right-hand engraved	= 27 pcs.
No. 133	Set of numbers 0-9	= 9 pcs.
No. 134	Set of capital letters from A-Z + symbol &	= 27 pcs.

Size of character mm	Ø x L mm	ΔΔ 0-9	ΔΔ A-Z
1-3	7 x 75	250g	750g
4	8 x 78	300g	950g
5	9 x 80	400g	1300g
6	11 x 80	650g	1900g
8	12 x 85	800g	2400g
10	14 x 90	1200g	3600g

GRAVUREM-R

Steel stamps with low-stress engraving and hardened and tempered stamping heads, in silky-dulled design.

Hardness at the engraving: 58-60 HRC.

Hardness at the stamping head: 38-46 HRC.

Up to 10mm size of characters in unbreakable blue plastic boxes.

The low-stress engraving ($r=0,3$ up to $r=0,6$ mm depending on the size of character) avoids every damage of the material and every effect of slot-punching (acc. to ASME-Standard).

Especially suited for marking of high charged components like tanks, gas-pipes, welding seams, high pressure pipes, turbines, thin sheets etc..

Also suitable for the marking of soft materials like aluminium, brass, lead, plastics, wood, leather and cardboard.

Item		
No. 140	Set of numbers 0-9	= 9 pcs.
No. 141	Set of capital letters from A-Z + symbol &	= 27 pcs.

Size of character mm	Ø x L mm	ΔΔ 0-9	ΔΔ A-Z
2	7 x 75	300g	800g
3	8 x 75	350g	1000g
4	9 x 78	500g	1300g
5	10 x 78	600g	1600g
6	12 x 84	850g	2400g
8	16 x 90	1600g	4600g
10	16 x 90	1600g	4600g



GRAVUREM-RP

Steel stamps with low-stress-dot-style engraving and hardened and tempered stamping heads, in silky-dulled design.

Hardness at the engraving: 58-60 HRC.
Hardness at the stamping head: 38-46 HRC.

Up to 10mm size of characters in unbreakable blue plastic boxes.

Item		
No. 143	Set of numbers 0-9	= 9 pcs.
No. 144	Set of capital letters from A-Z + symbol &	= 27 pcs.

Size of character mm	Ø x L mm	ΔΔ 0-9	ΔΔ A-Z
2	7 x 75	300g	800g
3	8 x 75	350g	1000g
4	9 x 78	500g	1300g
5	10 x 78	600g	1600g
6	12 x 84	850g	2400g
8	16 x 90	1600g	4600g
	16 x 90	1600g	4600g



GRAVUREM-Hand Stamps

Steel stamps for individual requirements.

Manufactured acc. to DIN 7353.
Type of character acc. to DIN 1451.

Made out of high quality tool steel in silky-dulled design.

Engravings as combinations of numbers and/or letters.

Logos and brands can be engraved in sharp or outline pattern according to your specifications. Right-hand, 2-line and low-stress engravings or engravings in a certain radius are also possible.

Measurements of shanks and width of impressions acc. to the following table:

Item
No. 150



Size of character	quantity of types (measurements of shanks and width of impressions)									Type DIN 1451
	2	3	4	5	6	7	8	9	10	
2 mm	8 x 8 x 70 3,3	9 x 9 x 75 5,3	10 x 10 x 80 7,3	12 x 8 x 80 9,3	16 x 10 x 85 11,3	16 x 10 x 85 13,3	20 x 10 x 90 15,3	20 x 10 x 90 17,3	25 x 10 x 95 19,3	medium
3 mm	9 x 9 x 75 5	12 x 8 x 80 8	16 x 10 x 85 11	20 x 10 x 90 14	20 x 10 x 90 17	25 x 10 x 95 20	25 x 10 x 95 23	30 x 10 x 100 26	40 x 10 x 100 29	medium
4 mm	10 x 10 x 80 5,1	12 x 8 x 80 8,4	16 x 10 x 85 11,6	20 x 10 x 90 14,9	25 x 10 x 95 18,2	25 x 10 x 95 21,5	30 x 10 x 100 24,8	40 x 12 x 100 28,1	40 x 12 x 100 31,4	medium-narrow
5 mm	11 x 11 x 80 6,3	16 x 10 x 85 10,3	20 x 10 x 90 14,3	25 x 10 x 95 18,3	25 x 10 x 95 22,3	30 x 10 x 100 24,3	40 x 12 x 100 28,3	40 x 12 x 100 32,3	40 x 12 x 100 36,3	medium-narrow
6 mm	12 x 12 x 85 6,0	16 x 10 x 85 10	20 x 10 x 85 14	25 x 10 x 90 18	25 x 10 x 95 22,5	30 x 10 x 100 26	40 x 12 x 100 31	40 x 12 x 100 36	50 x 15 x 100 40	narrow
8 mm	14 x 14 x 90 8	16 x 16 x 95 13	25 x 15 x 100 18,5	30 x 15 x 100 24	40 x 15 x 100 30	40 x 15 x 100 34,5	50 x 15 x 110 41	50 x 15 x 110 47,5	60 x 15 x 110 52,5	narrow
10 mm	16 x 16 x 90 10	20 x 15 x 100 17	30 x 15 x 100 24	40 x 15 x 100 30	40 x 15 x 100 37,5	50 x 15 x 110 43	60 x 15 x 110 52	70 x 20 x 110 59,5	40 x 20 x 110 66	narrow

GRAVUREM-Control Stamps

Style and quality similar to GRAVUREM-Hand stamps.

Hand stamps for the individual marking and identification through simple symbols.

Examples of impressions:



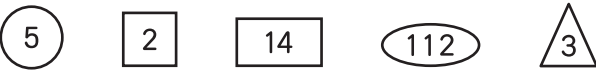
Item
No. 151

GRAVUREM-Welder's Control Stamps

Style and quality similar to GRAVUREM-Hand stamps.

Hand stamps with combinations of letters and/or numbers in round, triangle, rectangle, square or oval frame.

Examples of impressions:



Item
No. 152

GRAVUREM

Hand and control stamps.

GRAVUREM

Engraved Dies.

GRAVUREM-Engraved Dies

Steel stamps for mechanical use suitable for all industrial applications.

Bodies of stamps manufactured acc. to your requirements (sketch, sample ordrawing) engraving with highest precision acc. to your specifications.

In house expertise and experience in selection and heat treatment of appropriate tool steel.



GRAVUREM

Type Holder and Types.



GRAVUREM-Type Holder

Light edition, nickel-plated style (rustproof).

Available for manual use (tempered stamping head) or mechanical use (shank for installation in a press).

Locking of the types by pressure of a Philips-screw at the side.

The capacity of types is variable and will be manufactured acc. to your specifications.

Item
No. 160





GRAVUREM-Types

suitable for GRAVUREM-Type Holder (light edition).

Manufactured out of alloy tool steel, nickel plated (rustproof).

Hardness: 58-60 HRC.

Measurements of types in **Standard- or European-Norm** acc. to the following table:

Item No. 161			
-----------------	--	--	--

Standard Norm Size of character mm		European Norm Size of character mm	
	measurements mm		measurements mm
1	1,5 x 4 x 15	1	1,5 x 4 x 19
2	2 x 4 x 15	2	2 x 4 x 19
3	3 x 6 x 20	2,5	2,5 x 6 x 19
4	3 x 6 x 20	3	3 x 6 x 19
5	4 x 8 x 25	4	4 x 8 x 19
6	4 x 8 x 25	5	5 x 8 x 19
8	5 x 10 x 25	6	6 x 10 x 19
10	6 x 12 x 30	8	8 x 12 x 19
12	8 x 15 x 30	10	10 x 14 x 19
15	12 x 20 x 30		



GRAVUREM-Type Holder

Heavy edition, nickel-plated style (rustproof).

Available for manual use (handle with exchangeable punching cap)
or mechanical use (shank for installation in a press).

Types are fixed by a locking-pin.

The capacity of types is variable and will be manufactured
acc. to your specifications.

Item
No. 162



GRAVUREM-Types

Suitable for GRAVUREM-Type Holder (heavy edition).

Manufactured out of alloy tool steel, nickel plated (rustproof).

The types are provided with a radius-slot at the side for locking.

Hardness: 58-60 HRC.

Measurements of types acc. to the following table:

Item No. 163	
Size of character mm	measurements mm
2	3 x 6 x 32
3	3 x 6 x 32
4	4 x 8 x 32
5	4 x 8 x 32
6	5 x 10 x 32
8	5 x 10 x 32
10	6 x 12 x 32
12	8 x 15 x 32
15	10 x 20 x 32



GRAVUREM-Standard Type Set

Assortment of type stamps with a size of character from 1 up to 5mm, and a type holder for manual use (tempered stamping head) and a capacity of 8 pieces, in an unbreakable plastic box.

All pieces are nickel-plated (rustproof).

Content: 50 pcs. Types
0-9 (5 pcs. each)
5 pcs. Blank Spacer

Item
No. 164

Standard Norm	
Size of character mm	measurements mm
1,0	1,5 x 4,0 x 15,0
2,0	2,0 x 4,0 x 15,0
3,0	3,0 x 6,0 x 20,0
4,0	3,0 x 6,0 x 20,0
5,0	4,0 x 8,0 x 25,0





GRAVUREM-Eurotype Fount Set

GRAVUREM-Eurotype Fount Set

Assortment of type stamps with a size of character from 1 up to 5mm, and a type holder for manual use (tempered stamping head) or mechanical use (shank for installation in a press), in an unbreakable plastic box.

All pieces are nickel-plated (rustproof).

Content: 100 pcs. Types

A-Z und 0-9,

/ slash,

. full stop,

, comma

- hyphen and blank spacers.

Item

No. 165

European norm

Size of character mm

content

measurements mm

1,0

19 pcs.

1,5 x 4,0 x 19,0

1,5

19 pcs.

1,5 x 4,0 x 19,0

2,0

14 pcs.

2,0 x 4,0 x 19,0

2,5

15 pcs.

2,5 x 6,0 x 19,0

3,0

13 pcs.

3,0 x 6,0 x 19,0

4,0

10 pcs.

4,0 x 8,0 x 19,0

5,0

8 pcs.

5,0 x 8,0 x 19,0



GRAVUREM-Stamping Wheel 0-9

Manufactured out of alloy tool steel, nickel plated (rustproof).

Characters and size of character are marked and stained at the front side.

The stamping wheel can also be provided with a handle (300 x 15 mm) against extra-charge.

Item
No. 170



GRAVUREM-Stamping Wheel A-Z

Manufactured out of alloy tool steel, nickel plated (rustproof).

Characters and size of character are marked and stained at the front side.

The whole alphabet consists out of 3 wheels:

1. wheel: A-I
2. wheel: J-R
3. wheel: S-Z, &

The stamping wheels can also be provided with handles (300 x 15 mm) against extra-charge.

Item
No. 171



GRAVUREM-Compact Marker

Small multi-wheel-numberer with a compact and standardized design.

Completely nickel-plated (rustproof)
in a plastic box with transparent cover.

The compact marker is provided with a tempered impact handle
for manual use or with a shank for use in a press
acc. to your requirements.

Available in sizes of character from 1 up to 5mm with 6 wheels.
11-part engraving on each wheel (0-9 and one blank space)

Item
No. 180



GRAVUREM

Multi-wheel numberers.



GRAVUREM-Prägewerk

11-part engraving with pin-locking.

Available for manual use (handle with exchangeable punching cap) or mechanical use (shank for installation in a press).

Completely nickel-plated (rustproof).

Available in sizes of character from 2 up to 15mm with 3 up to 10 wheels.

Suitable for marking of all kinds of metal, many kinds of plastics, hard wood etc.

The wheels are usually engraved with numbers 0-9 and on blank space. Other arrangements of engravings acc. to your specification can be manufactured without extra charge.

Item
No. 190

Width of impression:

Size of characters mm	Number of wheels							
	3	4	5	6	7	8	9	10
2	5	7	9	11	13	15	17	19
3	8	11	14	17	20	23	26	29
4	9,5	13	16,5	20	23,5	27	30,5	34
5	11	15	19	23	27	31	35	39
6	11	15	19	23	27	31	35	39
8	17	23	29	35	41	47	53	59
10	20	27	34	41	48	55	62	69
12	23	31	39	47	55	63	71	79
15	29	39	49	59	69	79	89	99



GRAVUREM-Multi-wheel numberer

12/13-part engraving with spring-locking.

Available for manual use (tempered impact handle) or mechanical use (shank for installation in a press).

Completely nickel-plated (rustproof).

Available in sizes of character from 2 up to 15 mm with 3 up to 10 wheels.

Suitable for marking of all kinds of metal, many kinds of plastics, hard wood etc.

The wheels are usually engraved with numbers 0-9, /, - and one blank space. Other arrangements of engravings acc. to your specification can be manufactured without extra charge.

Item
No. 191

Width of impressions

Size of characters mm	Number of wheels							
	3	4	5	6	7	8	9	10
2	7,1	9,8	12,5	15,2	17,9	20,6	23,3	26
3	8,9	12,2	15,5	18,8	22,1	25,4	28,7	32
4	12,5	14	21,5	26,0	30,5	35	39,5	44
5	15,5	21	26,5	32	37,5	43	48,5	54
6	15,5	21	26,5	32	37,5	43	48,5	54
8	20	27	34	41	48	55	62	69
10	24,5	33	41,5	50	58,5	67	75,5	84
12	26	35	44	53	62	71	80	89
15	29	39	49	59	69	79	89	99



GRAVUREM-Multi-wheel automatic numbering head

Automatic change of numbers (max. 6 digits in one switch).

Available for manual use (tempered stamping head) or mechanical use (shank for installation in a press).

Completely nickel-plated (rustproof).

Available in sizes of characters from 1,5 up to 6mm with 3 up to 12 wheels.

Suitable for marking of all kinds of metal, many kinds of plastics, hard wood etc.

The wheels are usually engraved with numbers 0-9.

Item
No. 192

Width of impression

Size of characters mm	Number of wheels										
	3	4	5	6	7	8	9	10	11	12	
Small frame											
	5,8	8,1	10,5	12,8	15,7	17,5	19,8	22,2	24,5	26,8	
1,5	7,1	9,9	12,7	15,5	18,3	21,1	23,9	26,7	–	–	
2,0	8,1	11,2	14,3	17,4	20,6	23,7	26,8	–	–	–	
2,5	9,3	12,8	16,3	19,8	23,3	26,8	–	–	–	–	
3,0											
Large frame											
	11,6	15,9	20,2	24,5	28,8	33,1	37,4	41,7	46,0	–	
4,0	13,8	18,8	23,8	28,8	33,8	38,8	43,8	–	–	–	
5,0	16,6	22,6	28,6	34,6	40,6	46,6	–	–	–	–	



GRAVUREM

Branding irons and equipment.



GRAVUREM-Branding Iron

Electric heated 220 V – 125 up to 600 W.

For marking of wood, leather, cork, cardboard and plastics.

Small, handy edition for sizes of characters 10 up to 50 mm.

Size of impression (30 x 15 mm) up to (120 x 60 mm)
resp. with a diameter of 80 mm.

Engraving with combinations of numbers and letters.
Other engravings are available on application.

Item
No. 200



GRAVUREM-Branding Iron

Electric heated 220 V – 550 up to 3000 W.

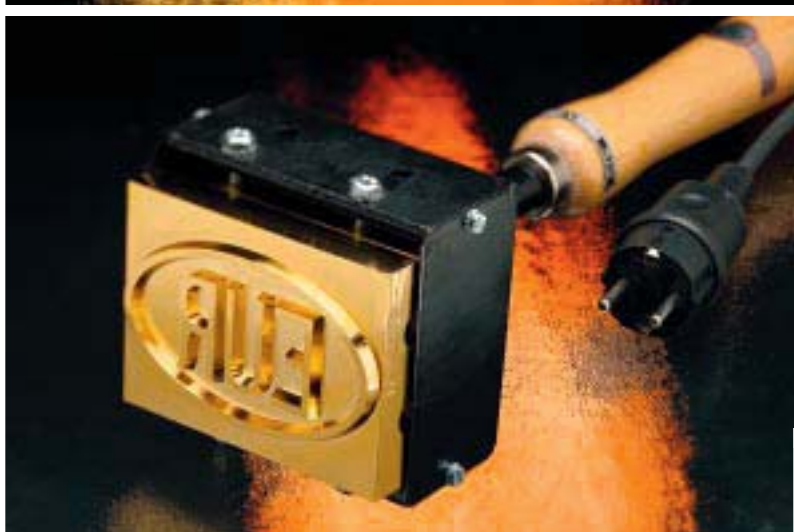
Heavy edition

Cast-iron body with handle or shank for use in a press for clean
and economical marking.

Strong, screwed on branding-plate engraved
in sizes of characters 50 up to 100 mm.
Size of impression (105 x 60 mm) up to (300 x 150 mm).

Engraving with combinations of numbers and letters.
Special engravings are available on application.

Item
No. 202





GRAVUREM-Branding Type Holder

Electric heated 220 V – 125 up to 1500 W.

With device for exchangeable types of brass.

Especially suited for quick changing combinations of numbers and letters.

Available in sizes of characters from 5 up to 40 mm.

Item
No. 204



GRAVUREM-Branding Types

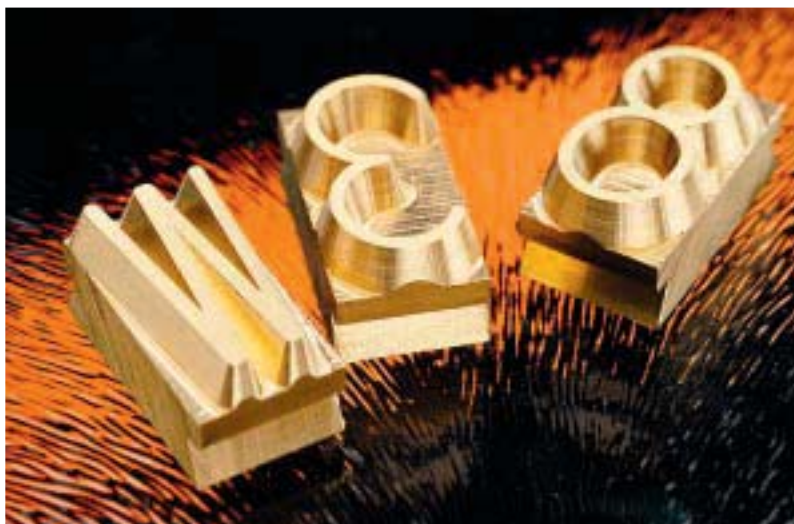
Suitable for GRAVUREM-Branding Type Holder.

Manufactured out of brass.

Engraved with numbers, letters and punctuation marks.

Special engravings are available on application.

Item
No. 205



GRAVUREM-Power Regulator

For regulation and control of the heating power of all GRAVUREM-Branding Irons.

Can be used up to 3000 W duration-power.

Item
No. 206



GRAVUREM-Roll Marking Machine

For marking the radius of small round pieces.

With integrated multi-wheel-numberer, type holder or die.

Solid construction in powder covered design.

Item
No. 450





GRAVUREM

Percussion Presses.

GRAVUREM-Percussion Press FP 600

Manual Model:

Max. pressing power: 600 kg (stepless adjustable)
Overall height: 500 mm
Table size: 100 x 100 mm
Weight: 11 kg

Pneumatic Model:

Max. pressing power: 600 kg (stepless adjustable)
Overall height: 500 mm
Table size: 100 x 100 mm
Weight: 14 kg

GRAVUREM-Percussion Press FP 3000

Manual Model:

Max. pressing power: 3000 kg (stepless adjustable)
Overall height: 650 mm
Table size: 160 x 160 mm
Weight: 31 kg

Pneumatic Model:

Max. pressing power: 3000 kg (stepless adjustable)
Overall height: 650 mm
Table size: 160 x 160 mm
Weight: 37 kg

GRAVUREM-Federschlagpresse FP 6000

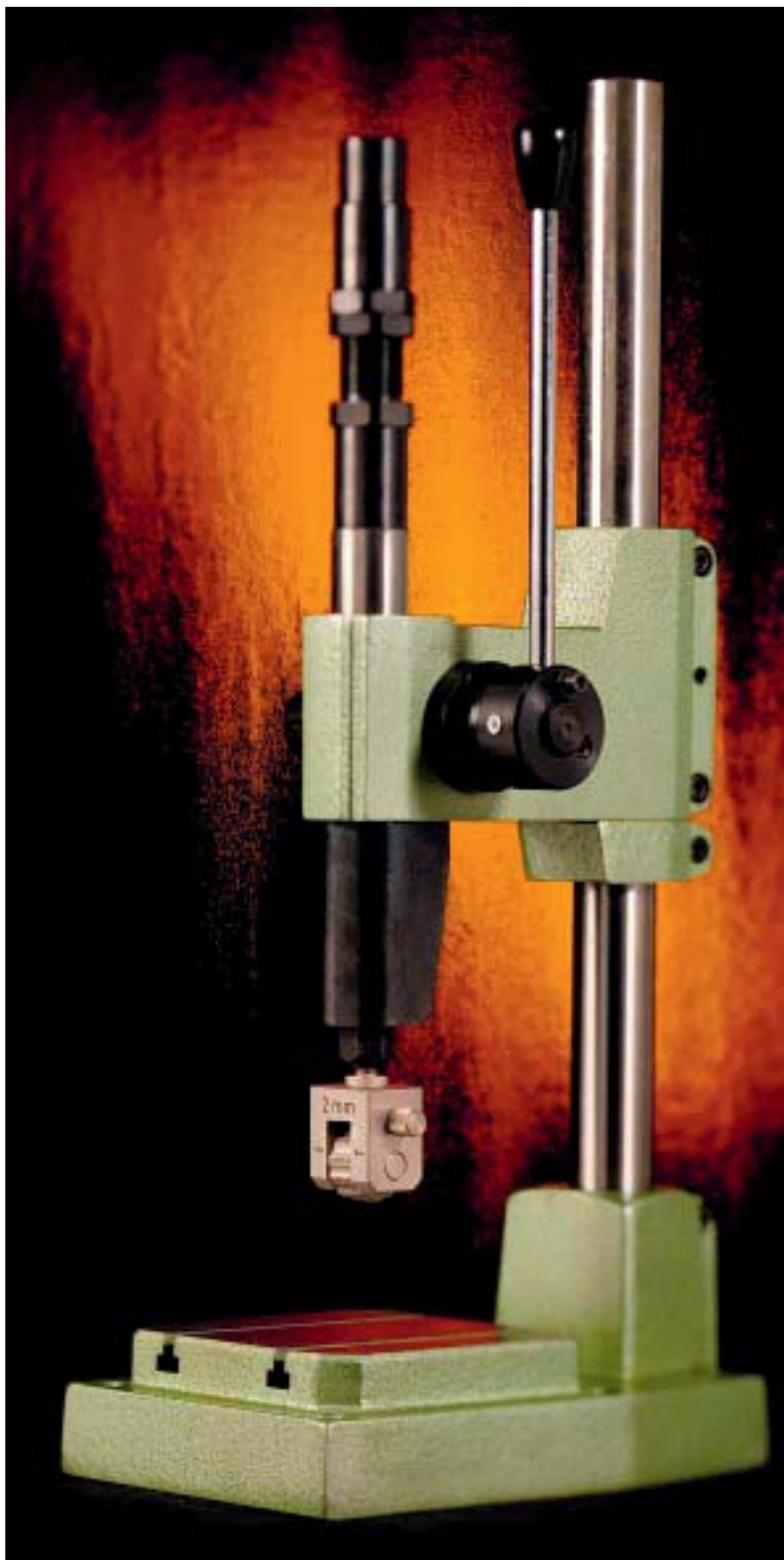
Manual Model:

Max. pressing power: 6000 kg (stepless adjustable)
Overall height: 1000 mm
Table size: 220 x 220 mm
Weight: 103 kg

Ausführung für pneumatische Betätigung:

Max. pressing power: 6000 kg (stepless adjustable)
Overall height: 1000 mm
Table size: 220 x 220 mm
Weight: 123 kg

Item
No. 400



Just and reasonable.

Our general conditions of sale and delivery.

1. Prices

All quotations will be understood in EUR, without added value tax, EXW Remscheid, excluding package, if not contrary agreed.

2. Placing and order

For all documents like drawings, sketches, samples etc. the client undertakes the full responsibility.

3. Terms of delivery

Fundamentally all named delivery times are without any obligation. Fines or amends on reason of the above named points are excluded.

4. Terms of payment

In case no other terms have been agreed, payment has to be made net, latest after 30 days from the date of our invoice, or immediately with a discount of 2%. For all orders with a volume less than 25,- EUR, we charge an additional amount of 10,- EUR.

5. Conditional sale

The ownership of all delivered items remains at the supplier, until the complete amount of the invoice, which refers to the mentioned items, has been transferred completely.

6. Warranty for defects

For every item, delivered by our company, we grant full warranty. If any item has a demonstrable defect, we will deliver replacement immediately free of charge. We will not deliver any replacement for items, which became useless because of an inappropriate use, wrong storage, natural attrition or alterations after receipt. Complaints have to be asserted latest 8 days after receipt of shipment.

7. Consignment

In case no other terms have been agreed, the dispatch happens on account and risk of the consignee.

8. Redelivery and exchange

Redelivery and exchange of any items can only be accepted with our expressed agreement and provides a consignment carriage paid. Credit-notes, issued by our company, will not be transferred and can only be charged with further deliveries.

9. Place of performance and competency of court

In all cases the place of performance and competency of court is Remscheid.

10. Prices

In all cases the prices of our actual price lists are valid. All price lists issued before become invalid.

11. Final clause

All arriving orders will be succumbed to the above named conditions. By placing an order, the client accepts our general conditions of sale and delivery. All other instructions in orders and inquiries are without any obligation and will not be accepted by us.